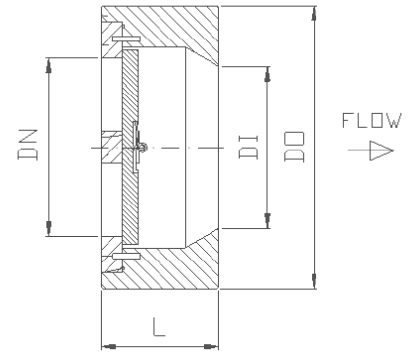
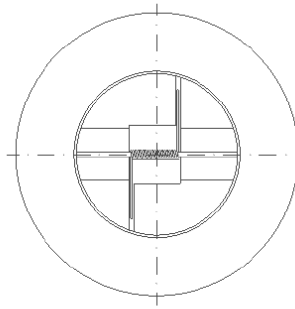


# LONG PATTERN TWIN PLATE



## SPECIAL CHARACTERISTICS

- Lightweight
- Compact
- Economical
- Easily Installed
- Tight shut-off (resilient seat)
- Anti Slam
- Face to face API 594
- Anti-slam
- Full flow area



| Model #  | 904   | 924                       | 934  | 944                      |
|--|---|---------------------------|--|--------------------------|
| Body   | P.P   | P.T.F.E                   | P.V.D.F  | P.V.C                    |
| Seat Carrier   | P.P   | P.T.F.E                   | P.V.D.F  | P.V.C                    |
| Plates   | P.P   | P.T.F.E                   | P.V.D.F  | P.V.C                    |
| Pin  | 316 S.S   | 316 S.S.                  | 316 S.S.   | 316 S.S.                 |
| <b>Seat:</b><br>(Metal) Suffix 'M'<br>(Viton) Suffix 'V' 204°C<br>(P.T.F.E) Suffix 'P' 250°C<br>(Neoprene) Suffix 'N' 120°C<br>Buna-N Suffix 'B' 120°C<br>EPDM Suffix 'E' 120°C<br>Peek Suffix 'K' 250°C | <b>Max. Temp</b><br>100°C                                 | <b>Max. Temp</b><br>250°C | <b>Max. Temp</b><br>140°C                            | <b>Max. Temp</b><br>60°C |
| <b>Spring:</b>   | Stainless Steel<br>Inconel-X-750<br>Titanium<br>Hastelloy |                           | Suffix 'S'<br>Suffix 'X'<br>Suffix 'T'<br>Suffix 'H' |                          |

## PRINCIPLE DIMENSIONS

|                            |                               |    |    |     |     |     |
|----------------------------|-------------------------------|----|----|-----|-----|-----|
| Nominal Size 'DN' (mm)     | 50                            | 65 | 80 | 100 | 125 | 150 |
| Length 'L' (mm)            | 60                            | 67 | 73 | 73  | 86  | 98  |
| Outside Diameter 'OD' (mm) | Please see OD chart on page 2 |    |    |     |     |     |
| Weight (Kg)                | 2                             | 3  | 4  | 5   | 6   | 8   |

Working Pressure up to 10 BarG

Larger sizes on request

Lugged style on request

Abacus Valves International Ltd  
Block 4, Riverside Road,  
Paddockholm Ind. Est.,  
Kilbirnie. KA25 7EW  
t: +44(0)1505 681777  
[www.abacusvalves.com](http://www.abacusvalves.com)  
[sales@abacusvalves.com](mailto:sales@abacusvalves.com)

### Notes:

- Wafer pattern design offers significant space and weight reduction compared with traditional flanged valve design.
- Superior by design
- 24 hour quotation turn around
- Comprehensive stocks
- Worldwide distribution
- Technical assistance and advice always available



## OUTSIDE DIAMETERS FOR WAFER CHECK VALVES

| Size (mm) | Size (in) | PN6 | PN10 | PN16 | PN25 | PN40 | Table 'D' | Table 'E' | ANSI 150 | ANSI 300 | ANSI 600 | ANSI 900 | ANSI 1500 | ANSI 2500 |
|-----------|-----------|-----|------|------|------|------|-----------|-----------|----------|----------|----------|----------|-----------|-----------|
| 50        | 2.0       | 98  | 109  | 109  | 109  | 109  | 99        | 99        | 105      | 111      | 111      | 143      | 143       | 146       |
| 65        | 2.5       | 118 | 129  | 129  | 129  | 129  | 111       | 111       | 124      | 130      | 130      | 165      | 165       | 168       |
| 80        | 3.0       | 134 | 144  | 144  | 144  | 144  | 130       | 130       | 137      | 149      | 149      | 168      | 174       | 197       |
| 100       | 4.0       | 154 | 164  | 164  | 170  | 170  | 162       | 162       | 175      | 181      | 193      | 206      | 209       | 235       |
| 125       | 5.0       | 184 | 194  | 194  | 196  | 196  | 194       | 194       | 197      | 216      | 241      | 247      | 254       | 279       |
| 150       | 6.0       | 209 | 220  | 220  | 226  | 226  | 219       | 214       | 222      | 251      | 266      | 289      | 282       | 317       |

Please note:

- The check valves above are not suitable for heavily pulsating flow such as can be experienced to reciprocating pumps or compressors
- If the wafer check valve you require is not shown or if you have a special design requirement, please contact us on +44 (0) 1505 681777 or [sales@abacusvalves.com](mailto:sales@abacusvalves.com)

Abacus Valves International Ltd  
 Block 4, Riverside Road,  
 Paddockholm Ind. Est.,  
 Kilbirnie. KA25 7EW  
 t: +44(0)1505 681777  
[www.abacusvalves.com](http://www.abacusvalves.com)  
[sales@abacusvalves.com](mailto:sales@abacusvalves.com)

**Notes:**

- **Wafer pattern design offers significant space and weight reduction compared with traditional flanged valve design.**
- **Superior by design**
- **24 hour quotation turn around**
- **Comprehensive stocks**
- **Worldwide distribution**
- **Technical assistance and advice always available**